



# MS-H650

## Auto Hematology Analyzer

Accessible Utilities In Optimizing Hematology



Accurate and reliable



Bi-directional interface



User-friendly



Safe and secure

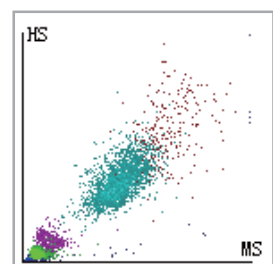
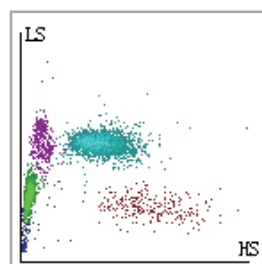
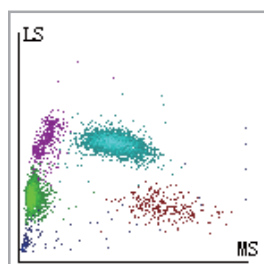
## Product Feature & Specification

Throughput		Intelligent Flagging for Pathological Samples	
60 Samples/hour		10.4 inch large TFT touch screen with user-friendly software	
Result Performance		Reagent	
Linearity	Precision(CV%)	DIL-C Diluent, LYC-1 Lyse, LYC-2 Lyse, CLE-P Cleanser	
WBC 0~300 x 10 <sup>9</sup> /L	≤2.0%(4.0~15.0)	<b>Carryover</b>	
RBC 0~8.5 x 10 <sup>12</sup> /L	≤1.5%(3.5~6.0)	WBC≤0.5%	
HGB 0~250g/L	≤1.5%(110~180)	RBC≤0.5%	
HCT 0~67%		HGB≤0.5%	
PLT 0~3000 x 10 <sup>9</sup> /L	≤4.0%(150~500)	PLT≤1.0%	
MCV	≤1.0%(70~120)fL	<b>Automatic floating discriminators for WBC, RBC,PLT counting</b>	
Digital Sheath-Flow		Auto sample clot detection and unclotting function	
		Good reproducibility	



The analysis has minimized required sample volume to 15µL making it easier for pediatric and geriatric patients.

The Real Dual-Optical counting channels enable the DIFF and BASO to be analyzed more precisely and efficiently





- A LAN connection and 4 USB ports for mouse, keyboard, barcode scanner and data transmission



- User-friendly interface and comprehensive data management



- Only 2 Reagent (Dilute, Lyse) for routine testing, 1 Reagent (Cleanser) for regular maintenance

- 23 reportable and 4 research parameters CBC
- 3 histograms (WBC, RBC, PLT) and 3 scattergrams for WBC differential and 1 dedicated to Basophil measurement
- User-friendly interface and easy operation with intuitive color touch screen
- Innovative technology incl. Tri-angle Laser Scatter, Flow Cytometry, Chemical Dye
- Open Tube Sampling Mode for whole blood, capillary, pre-diluted
- Minimized sample volume to 15µL



**Compact and Cost Effective Hematology Platform with Laser Optical Counting Technology**

# MS-H650

## Auto Hematology Analyzer

### Technical Specification

<b>Principles</b>	<b>Data Storage Capacity</b>
Tri-angle Laser Scatter, Flow Cytometry, Chemical Dye method for 5-part differential analysis and WBC counting	Up to 50,000 results including numeric and graphical data
Electrical Impedance method for RBC & PLT counting	<b>Communication</b>
Non-cyanide method for hemoglobin testing	LAN port support HL7 protocol
<b>Parameters</b>	<b>Interface</b>
23 Reportable Parameters CBC: Whole Blood Mode: WBC, Lym#, Neu#, Mon#, Eos#, Bas#, Lym%, Neu%, Mon%, Eos%, Bas%, RBC, HGB, HCT, MCV, MCH, MCHC, RDW-CV, RDW-SD, PLT, MPV, PDW, PCT. 4 Research Parameters: ALY#, LIC#, ALY%, LIC% 3 Histograms: WBC, RBC, PLT 3 Scattergrams for WBC Differential and 1 for Basophil measurement	4 USB ports, 1 LAN connection
<b>Sample Volume</b>	Support Bi-directional LIS
Whole blood mode 15µL	<b>Printout</b>
Capillary mode 15µL	External laser printer/ Inkjet printer, various printout formats and customized formats
Pre-diluted mode 20µL	<b>Operating Environment</b>
<b>Throughput</b>	Temperature: 10%~30%
60 Samples / hour	Humidity: 20%~85%
<b>Display</b>	<b>Air pressure</b>
10.4"Intuitive color touch screen	70kPa~106kPa
<b>Multi- Language</b>	<b>Power requirement</b>
Chinese, English available Spanish, Portuguese,Russia,French under development	A.C100V~240V (50/60Hz), ≤250VA
	<b>Dimension</b>
	360mm(L) x 470mm(W) x 430mm(H)
	<b>Weight</b>
	28KG

### MEDICALSYSTEM BIOTECHNOLOGY CO., LTD.

ADD: No.299, Qiming South Road, Yinzhou District, Ningbo City, Zhejiang Prov. China  
TEL: +86-574-55337009 FAX: +86-574-88231889  
ZIP Code: 315104 E-mail: sales@nbmedicalsystem.com

